

CTA milk[®]
VACUUM PUMPS FOR MILKING MACHINES

CATALOGUE 2015

**VACUUM PUMPS
and ACCESSORIES**

PLEASE TO READ WITH ATTENTION THE ANNOTATION

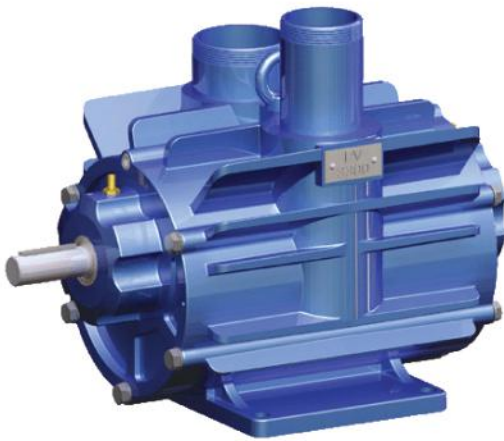
ANNOTATION:

- The **P.V. naked** are only pump with feet bracket and nipples brass oil.
- The **P.V.** pumps (**Vacuum Pumps**) are inclusive of pulley silencer, oiler and valve not return joint adiprene.
- The **G.P.V. (Vacuum Pump Group)** on bracket or on tank is inclusive of everything.
- The **G.P.V. (Vacuum Pump Group) without electric motor** is complete with everything excluding motor. Are included the motor pulley and the trasmission belt. In all order of these one please specificate wich type of electric motor do you will to install, for supply to you the right pulley motor.
- In the **G.P.V. 3300/2200** the oil/air separator and the ventilation fun are included in the price.
- The fun-ventilation is include in the G.P.V.3300 - 2200 - 1600 - 1500 - 1000
- All the exit joint for tank are supply with same exit (the reduction on demand!)
- **N.B.** All the Vacuum tank Lt.110 G.P.V. 3300/2200/BALACING vertical and horizzontal will be supply with exit/entry 110 mm / 4"!
- All the tanks are totally made of hot galvanized stell.
For the G.P.V. 1600/1500/1000/750/500 the oil/air separator is extra.
- All the CTA vacuum pumps are in accordance with ECC standards and supplied operator's manual which you will find inside the machine.
- The manual and the label in the pumps indicate the serial number, model and complete with date of construction of the pump (**important for the warranty**).
- The guarantee is valid for 1 year from the date of the manual and the date indicated on the ECC label. The guarantee does not cover defects as the result of incorrect installation or different to the indicated. The guarantee cover only repair or remplacement of the defective parts. In any event responsibility for any accessory damages due to machine stoppage are excluded. All electrical parts are excluded from the guarantee.
- CTA milk reserves the right to make any modifications for technical reasons.
- All the G.P.V. with vacuum tank are included of inside filter.
- The G.P.V. on tank all exit adiprene sleeves are same misure (es: 3"-3"; 2"-2"; 1"1/4-1"1/4).
- The balancing vacuum tanks will be supply without adiprene sleeves (to ordered separatly) because there are many possible combinations
- All vacuum tank for G.P.V. will be supply with adiprene sleeves standard (es.3"-3"; 4"-4"); any reductions must be ordered separatly.
- All the G.P.V. without el.motor must be order indicated wich type of motor will be installed (to supply te right pulley).
- **The litres are indicated as n.l./min (normal liter/minute) at 50 kpa measured at 500 metres above sea level.**

THE PRICE ARE OF LIST, IN EURO, ExWorks.

GENERAL INDEX CATALOGUE 2015

ARTICLE DESCRIPTION	PAGE
· G.P.V.3300	01 - 02
· G.P.V.2200	03 - 04
· G.P.V.1600	05 - 06
· G.P.V.1500	07 - 08
· G.P.V.1000	09 - 10
· G.P.V.750	11 - 12
· G.P.V.500	13 - 14
· G.P.V.350	15 - 16
· G.P.V.280	17 - 18
· G.P.V.250	19
· G.P.V.200	20
· G.P.V.180	21
· Vacuum Pumps and Spare Parts mod. AL	22
· Vacuum Cocks, Vacuum Meters and Valves	23
· Vanes for Vacuum Pumps	24
· Capillary Oiler	25
· Drip Oiler	26
· Tank Lt. 110/85/65/45/28	27
· Tanks Lt. 28/22, vertical and horizontal balancing tank and wall bracket	28
· Cardan joint, cartridge filter and particolar in rubber	29
· Adiprene sleeves and caps and belt	30
· Pulleys for motors and pulleys for pumps	31
· Silencers and separators	32
· Belt stretcher slides , belt protection and bracket for tank	33
· Brackets for tank and complete floor brackets	34
· Electric motors and condenser for one-phase motor	35
· Flow meter, accessories and oil	36



P.V.3300 BARE:

CAPILLARY OIL SYSTEM:

→ P.V.3300 BARE
with Nipples Oil 14 x 27 Thread 1/4" Inlet Ø5 [cod.1001300]

DRIP FEED OIL SYSTEM:

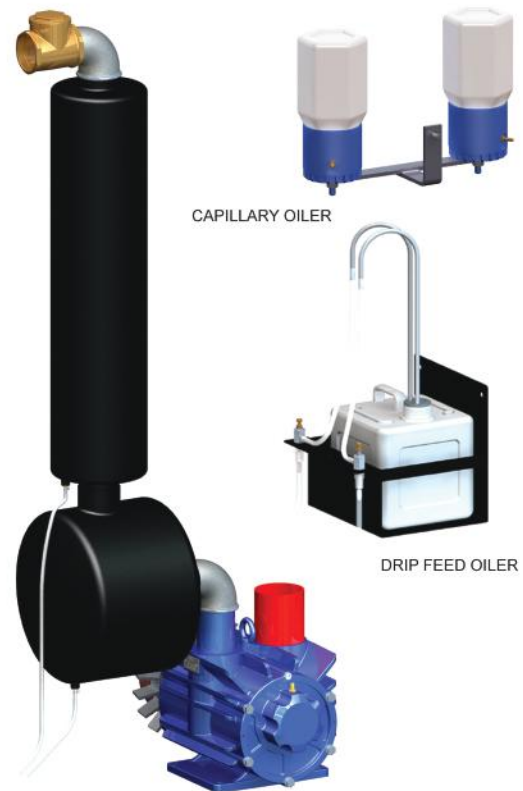
→ P.V.3300 BARE
with Nipples Oil 14 x 27 Thread 1/4" Inlet Ø8 [cod.1002300]

P.V.3300 COMPLETE:

- P.V.3300 BARE
- SILENCER
- OIL SEPARATOR
- GALVANIZED ELBOW
- NON RETURN VALVE BRASS 2"
- ADP SLEEVE 3" X 3"
- OILER
- PULLEY PUMP 180 2B Ø28 key 8 + FITTING FAN

→ P.V.3300 ONLY PUMP complete
with Capillary Oiler [cod.1000300]

→ P.V.3300 ONLY PUMP complete
with Drip Feed Oiler [cod.1000310]



CAPILLARY OILER

DRIP FEED OILER

TECHNICAL INFORMATION:

POWER MOTOR	Kpa	RPM PUMP	N.L./MIN.	PULLEY PUMP	MOTOR PULLEY	ASSORB (A)	PRESSURE EXIT kpa	RPM MOTOR
7,5 Kw / 10 Hp	50	1050	3300	180 2B	130 2B	12,7 A	4	1400
5,5 Kw / 7,5 Hp	50	970	2950	180 2B	120 2B	10,8 A	3	1400
5,5 Kw / 7,5 Hp	50	900	2700	180 2B	112 2B	8,9 A	3	1400



G.P.V.3300 ON BRACKET:

CAPILLARY OILER:

- G.P.V.3300 Hp.7,5 - Lt/min. 2700 [cod.1000301]
- G.P.V.3300 Hp.7,5 - Lt/min. 2950 [cod.1000302]
- G.P.V.3300 Hp.10 - Lt/min. 3300 [cod.1000303]
- G.P.V.3300 without electric motor * [cod.1000304]

DRIP FEED OILER:

- G.P.V.3300 Hp.7,5 - Lt/min. 2700 [cod.1000311]
- G.P.V.3300 Hp.7,5 - Lt/min. 2950 [cod.1000312]
- G.P.V.3300 Hp.10 - Lt/min. 3300 [cod.1000313]
- G.P.V.3300 without electric motor * [cod.1000314]

N.B.: The pump without electric motor will be supplied of motor pulley and belt trasmission

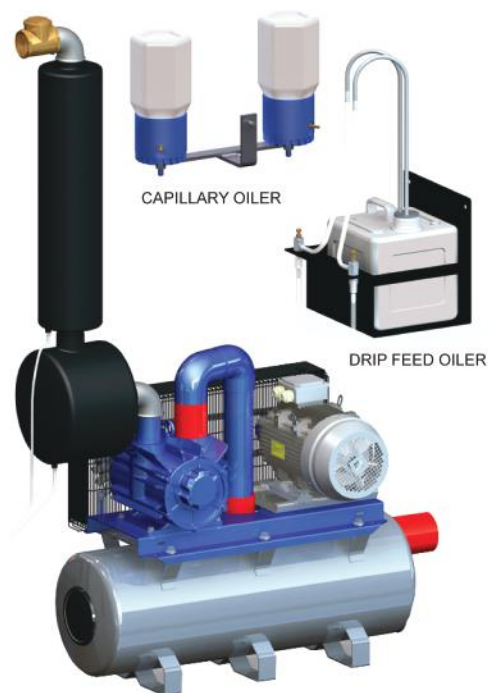
G.P.V.3300 ON TANK Lt.110:

CAPILLARY OILER:

- G.P.V.3300 Hp.7,5 - Lt/min. 2700 [cod.1000305]
- G.P.V.3300 Hp.7,5 - Lt/min. 2950 [cod.1000306]
- G.P.V.3300 Hp.10 - Lt/min. 3300 [cod.1000307]
- G.P.V.3300 without electric motor * [cod.1000308]

DRIP FEED OILER:

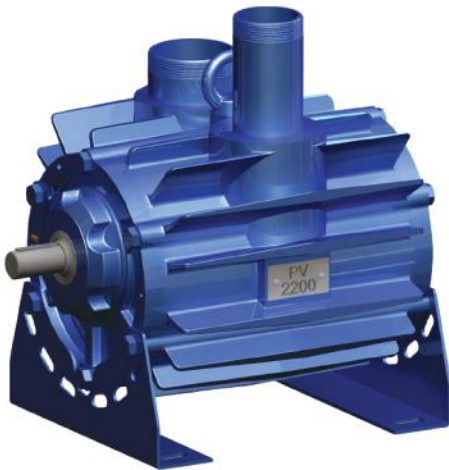
- G.P.V.3300 Hp.7,5 - Lt/min. 2700 [cod.1000321]
- G.P.V.3300 Hp.7,5 - Lt/min. 2950 [cod.1000322]
- G.P.V.3300 Hp.10 - Lt/min. 3300 [cod.1000323]
- G.P.V.3300 without electric motor * [cod.1000324]



N.B.: The pump without electric motor will be supplied of motor pulley and belt trasmission

Specification:

- Exit Tank: Lt. 110 4" - 110 mm
- * - In the order of G.P.V. without electric motor please specificate wich type of motor will to install, for supply to you the right pulley motor.



P.V.2200 BARE:

CAPILLARY OIL SYSTEM:

→ P.V.2200 BARE
with Nipples Oil 14 x 27 Thread 1/4" Inlet Ø5 [cod.1001100]

DRIP FEED OIL SYSTEM:

→ P.V.2200 BARE
with Nipples Oil 14 x 27 Thread 1/4" Inlet Ø8 [cod.1002100]

P.V.2200 COMPLETE:

- P.V.2200 BARE
- SILENCER
- SEPARATOR
- GALVANIZED ELBOW
- NON RETURN VALVE BRASS 2"
- ADP SLEEVE 2"1/2 x 2"1/2
- OILER
- PULLEY PUMP 150 2B Ø24 key 8 + FITTING FUN

→ P.V.2200 ONLY PUMP complete
with Capillary Oiler [cod.1000100]

→ P.V.2200 ONLY PUMP complete
with Drip Feed Oiler [cod.1000110]



TECHNICAL INFORMATION:

POWER MOTOR	Kpa	RPM PUMP	N.L./MIN.	PULLEY PUMP	MOTOR PULLEY	ASSORB (A)	PRESSURE EXIT kpa	RPM MOTOR
5,5 Kw / 7,5 Hp	50	1325	2300	150 2B	140 2B	10,9 A	3	1400
4 Kw / 5,5 Hp	50	1225	2070	150 2B	125 2B	8,9 A	3	1400
4 Kw / 5,5 Hp	50	1150	1880	150 2B	120 2B	8,9 A	3	1400



G.P.V.2200 ON BRACKET:

CAPILLARY OILER:

- G.P.V.2200 Hp.5,5 - Lt/min. 1800 [cod.1000101]
- G.P.V.2200 Hp.5,5 - Lt/min. 2000 [cod.1000102]
- G.P.V.2200 Hp.7,5 - Lt/min. 2300 [cod.1000103]
- G.P.V.2200 without electric motor * [cod.1000104]

DRIP FEED OILER:

- G.P.V.2200 Hp.5,5 - Lt/min. 1800 [cod.1000111]
- G.P.V.2200 Hp.5,5 - Lt/min. 2000 [cod.1000112]
- G.P.V.2200 Hp.7,5 - Lt/min. 2300 [cod.1000113]
- G.P.V.2200 without electric motor * [cod.1000114]

N.B.: The pump without electric motor will be supplied of motor pulley and belt trasmission

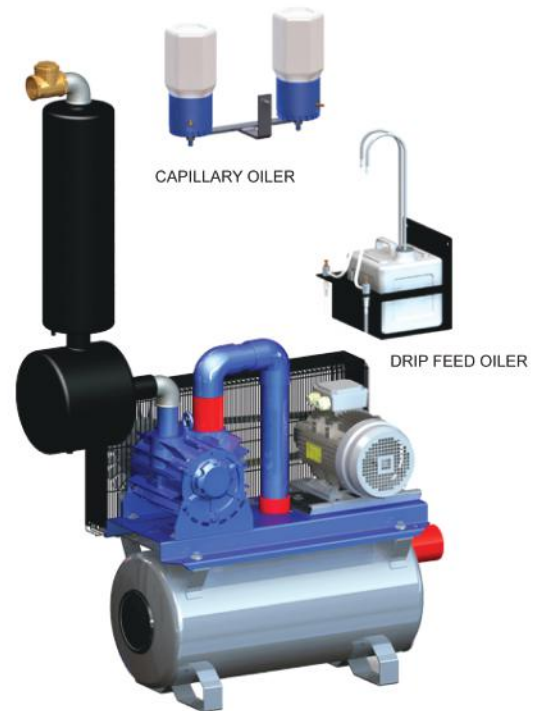
G.P.V.2200 ON TANK Lt.110 and Lt.85:

CAPILLARY OILER:

- G.P.V.2200 Lt.85 - Hp.5,5 - Lt/min. 1800 [cod.1000105]
- G.P.V.2200 Lt.85 - Hp.5,5 - Lt/min. 2000 [cod.1000106]
- G.P.V.2200 Lt.85 - Hp.7,5 - Lt/min. 2600 [cod.1000107]
- G.P.V.2200 Lt.85 - without electric motor * [cod.1000108]
- G.P.V.2200 Lt.110 - Hp.5,5 - Lt/min. 1800 [cod.1000130]
- G.P.V.2200 Lt.110 - Hp.5,5 - Lt/min. 2000 [cod.1000131]
- G.P.V.2200 Lt.110 - Hp.7,5 - Lt/min. 2600 [cod.1000132]
- G.P.V.2200 Lt.110 - without electric motor * [cod.1000133]

DRIP FEED OILER:

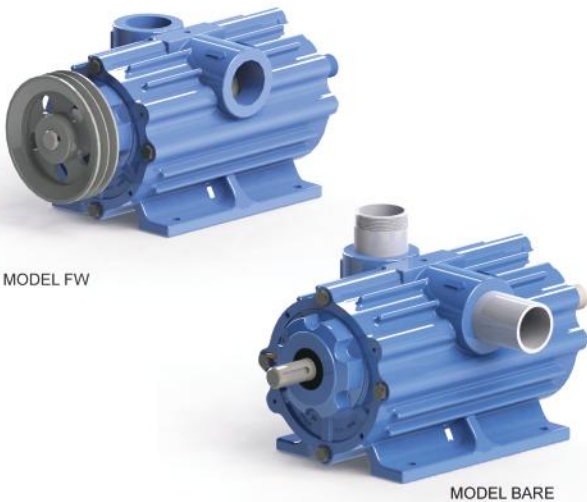
- G.P.V.2200 Lt.85 - Hp.5,5 - Lt/min. 1800 [cod.1000115]
- G.P.V.2200 Lt.85 - Hp.5,5 - Lt/min. 2000 [cod.1000116]
- G.P.V.2200 Lt.85 - Hp.7,5 - Lt/min. 2600 [cod.1000117]
- G.P.V.2200 Lt.85 - without electric motor * [cod.1000118]
- G.P.V.2200 Lt.110 - Hp.5,5 - Lt/min. 1800 [cod.1000134]
- G.P.V.2200 Lt.110 - Hp.5,5 - Lt/min. 2000 [cod.1000135]
- G.P.V.2200 Lt.110 - Hp.7,5 - Lt/min. 2600 [cod.1000136]
- G.P.V.2200 Lt.110 - without electric motor * [cod.1000137]



N.B.: The pump without electric motor will be supplied of motor pulley and belt trasmission

Specification:

- Exit Tank: Lt. 110 4" - 110 mm; Lt. 85 - 90 mm
- * - In the order of G.P.V. without electric motor please specificate wich type of motor will to install, for supply to you the right pulley motor.



P.V.1600:

MODEL FW:

→ P.V.1600 mod.FW with PULLEY PUMP 170 2A [cod.1000400]

CAPILLARY OIL SYSTEM:

→ P.V.1600 BARE with Nipples Oil 14 x 27 Thread 1/4" Inlet Ø5 [cod.1000399]

DRIP FEED OIL SYSTEM:

→ P.V.1600 BARE with Nipples Oil 14 x 27 Thread 1/4" Inlet Ø8 [cod.1000398]

P.V.1600 COMPLETE:

- P.V.1600 BARE
- SILENCER
- GALVANIZED ELBOW
- ADP SLEEVE 2" x 2"
- NON RETURN BRASS VALVE 2"
- PULLEY PUMP 150 2A Ø24 key 8 + FITTING FAN

→ P.V.1600 ONLY PUMP complete with Capillary Oiler [cod.1000401]

→ P.V.1600 ONLY PUMP complete with Drip Feed Oiler [cod.1000402]



OPTIONAL:

As far as the P.V.1600 COMPLETE, the G.P.V.1600 ON BRACKET and the G.P.V.1600 ON TANK is possible, upon request to be provided with OIL/AIR SEPARATOR 1000/1500/1600 [cod.2000011]

TECHNICAL INFORMATION:

POWER MOTOR	Kpa	RPM PUMP	N.L./MIN.	PULLEY PUMP	MOTOR PULLEY	ASSORB (A)	PRESSURE EXIT kpa	RPM MOTOR
Kw. 4 / Hp. 5,5	50	1250	1700	150 2A	130 2A	7,8 A	7	1400
Kw. 3 / Hp. 4	50	1070	1500	150 2A	110 2A	6,5 A	6	1400



G.P.V.1600 ON BRACKET:

CAPILLARY OILER:

- G.P.V.1600 Hp.4 - Lt/min. 1500 [cod.1000409]
- G.P.V.1600 Hp.5,5 - Lt/min. 1700 [cod.1000410]
- G.P.V.1600 without electric motor * [cod.1000411]

DRIP FEED OILER:

- G.P.V.1600 Hp.4 - Lt/min. 1500 [cod.1000412]
- G.P.V.1600 Hp.5,5 - Lt/min. 1700 [cod.1000413]
- G.P.V.1600 without electric motor * [cod.1000414]

N.B.: The pump without electric motor will be supplied of motor pulley and belt trasmission

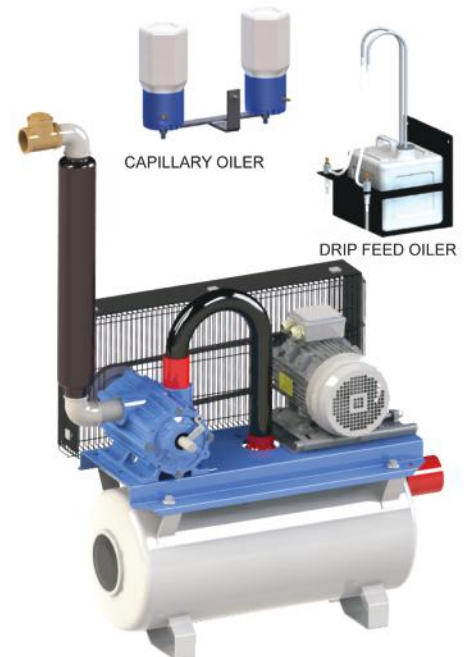
G.P.V.1600 ON TANK Lt.85 and Lt.110:

CAPILLARY OILER:

- G.P.V.1600 Lt.85 - Hp.4 - Lt/min. 1500 [cod.1000415]
- G.P.V.1600 Lt.85 - Hp.5,5 - Lt/min. 1700 [cod.1000416]
- G.P.V.1600 Lt.85 - without electric motor * [cod.1000417]
- G.P.V.1600 Lt.110 - Hp.4 - Lt/min. 1500 [cod.1000418]
- G.P.V.1600 Lt.110 - Hp.5,5 - Lt/min. 1700 [cod.1000419]
- G.P.V.1600 Lt.110 - without electric motor * [cod.1000421]

DRIP FEED OILER:

- G.P.V.1600 Lt.85 - Hp.4 - Lt/min. 1500 [cod.1000422]
- G.P.V.1600 Lt.85 - Hp.5,5 - Lt/min. 1700 [cod.1000423]
- G.P.V.1600 Lt.85 - without electric motor * [cod.1000424]
- G.P.V.1600 Lt.110 - Hp.4 - Lt/min. 1500 [cod.1000425]
- G.P.V.1600 Lt.110 - Hp.5,5 - Lt/min. 1700 [cod.1000426]
- G.P.V.1600 Lt.110 - without electric motor * [cod.1000427]



N.B.: The pump without electric motor will be supplied of motor pulley and belt trasmission

Specification:

- Exit Tank: Lt. 110 4" - 110 mm; Lt. 85 - 90 mm;
- * - In the order of G.P.V. without electric motor please specificate wich type of motor will to install, for supply to you the right pulley motor.



P.V.1500 BARE:

CAPILLARY OIL SYSTEM:

→ P.V.1500 BARE
with Nipples Oil 14 x 27 Thread 1/4" Inlet Ø5 [cod.1000019]

P.V.1500 COMPLETE:

- P.V.1500 BARE
- SILENCER
- GALVANIZED ELBOW
- ADP SLEEVE 2" x 2"
- NON RETURN VALVE BRASS 2"
- PULLEY PUMP 150 1B Ø 24 key 8 + FITTING FAN

→ P.V.1500 ONLY PUMP complete
with Capillary Oiler

[cod.1000020]



OPTIONAL

OPTIONAL:

As far as the P.V.1500 COMPLETE, the G.P.V.1500 ON BRACKET and the G.P.V.1500 ON TANK is possible, upon request to be provided with OIL/AIR SEPARATOR 1000/1500/1600 [cod.2000011]

TECHNICAL INFORMATION:

POWER MOTOR	Kpa	RPM PUMP	N.L./MIN.	PULLEY PUMP	MOTOR PULLEY	ASSORB (A)	PRESSURE EXIT kpa	RPM MOTOR
Kw. 4 / Hp. 5,5	50	1350	1500	150 1B	140 1B	7,4 A	3	1400
Kw. 3 / Hp. 4	50	1175	1250	150 1B	125 1B	5,8 A	3	1400
Kw. 2,2 / Hp. 3	50	925	1020	150 1B	100 1B	4,8 A	2	1400



G.P.V.1500 ON BRACKET:

CAPILLARY OILER:

- G.P.V.1500 Hp. 3 - Lt/min. 1020 [cod.1000016]
- G.P.V.1500 Hp. 4 - Lt/min. 1250 [cod.1000022]
- G.P.V.1500 Hp.5,5 - Lt/min. 1500 [cod.1000021]
- G.P.V.1500 without electric motor * [cod.1000023]

N.B.: The pump without electric motor will be supplied of motor pulley and belt trasmission

G.P.V.1500 ON TANK Lt.65 and Lt.85:

CAPILLARY OILER:

- G.P.V.1500 Lt.65 - Hp. 3 - Lt/min. 1020 [cod.1000126]
- G.P.V.1500 Lt.65 - Hp. 4 - Lt/min. 1250 [cod.1000025]
- G.P.V.1500 Lt.65 - Hp.5,5 - Lt/min. 1500 [cod.1000024]
- G.P.V.1500 Lt.65 - without electric motor * [cod.1000026]
- G.P.V.1500 Lt.85 - Hp. 3 - Lt/min. 1020 [cod.1000049]
- G.P.V.1500 Lt.85 - Hp. 4 - Lt/min. 1250 [cod.1000028]
- G.P.V.1500 Lt.85 - Hp.5,5 - Lt/min. 1500 [cod.1000027]
- G.P.V.1500 Lt.85 - without electric motor * [cod.1000029]



N.B.: The pump without electric motor will be supplied of motor pulley and belt trasmission

Specification:

- Exit Tank: Lt. 85 3" - 90 mm; Lt. 65 2" - 60 mm
- * - In the order of G.P.V. without electric motor please specificate wich type of motor will to install, for supply to you the right pulley motor.



P.V.1000 BARE:

CAPILLARY OIL SYSTEM:

→ P.V.1000 BARE
with Nipples Oil 14 x 27 Thread 1/4" Inlet Ø5 [cod.1001030]

P.V.1000 COMPLETE:

- P.V.1000 BARE
- SILENCER
- GALVANIZED ELBOW
- ADP SLEEVE 2" x 2"
- NON RETURN VALVE BRASS 2"
- PULLEY PUMP 150 1B Ø 24 key 8 + FITTING FAN

→ P.V.1000 ONLY PUMP complete
with Capillary Oiler

[cod.1000030]



OPTIONAL

OPTIONAL:

As far as the P.V.1000 COMPLETE, the G.P.V.1000 ON BRACKET and the G.P.V.1000 ON TANK is possible, upon request to be provided with OIL/AIR SEPARATOR 1000/1500/1600 [cod.2000011]

TECHNICAL INFORMATION:

POWER MOTOR	Kpa	RPM PUMP	N.L./MIN.	PULLEY PUMP	MOTOR PULLEY	ASSORB (A)	PRESSURE EXIT kpa	RPM MOTOR
Kw. 3 / Hp. 4	50	1250	1000	150 1B	130 1B	5,2 A	3	1400
Kw. 2,2 / Hp. 3	50	1100	900	150 1B	120 1B	4,7 A	3	1400



G.P.V.1000 ON BRACKET:

CAPILLARY OILER:

- G.P.V.1000 Hp. 3 - Lt/min. 900 [cod.1000032]
- G.P.V.1000 Hp. 3 220V - Lt/min. 900 [cod.1100032]
- G.P.V.1000 Hp. 4 - Lt/min. 1000 [cod.1000031]
- G.P.V.1000 without electric motor * [cod.1000033]

N.B.: The pump without electric motor will be supplied of motor pulley and belt trasmission

G.P.V.1000 ON TANK Lt.85 and Lt.65:

CAPILLARY OILER:

- G.P.V.1000 Lt.65 - Hp. 3 - Lt/min. 900 [cod.1000035]
- G.P.V.1000 Lt.65 - Hp. 3 220V - Lt/min. 900 [cod.1100035]
- G.P.V.1000 Lt.65 - Hp. 4 - Lt/min. 1000 [cod.1000034]
- G.P.V.1000 Lt.65 - without electric motor * [cod.1000036]
- G.P.V.1000 Lt.85 - Hp. 3 - Lt/min. 900 [cod.1000038]
- G.P.V.1000 Lt.85 - Hp. 3 220V - Lt/min. 900 [cod.1100038]
- G.P.V.1000 Lt.85 - Hp. 4 - Lt/min. 1000 [cod.1000037]
- G.P.V.1000 Lt.85 - without electric motor * [cod.1000039]



N.B.: The pump without electric motor will be supplied of motor pulley and belt trasmission

Specification:

- Exit Tank: Lt. 85 3" - 90 mm; Lt. 65 2" - 60 mm
- * - In the order of G.P.V. without electric motor please specificate wich type of motor will to install, for supply to you the right pulley motor.



P.V.750 BARE:

CAPILLARY OIL SYSTEM:

- P.V.750 BARE with Nipples Oil 14 x 27 Thread 1/4" Inlet Ø5 [cod.1001040]

P.V.750 COMPLETE:

- P.V.750 BARE
- SILENCER
- GALVANIZED ELBOW
- NON RETURN VALVE BRASS 1"1/4
- ADP SLEEVE 1"1/4 x 1"1/4
- PULLEY PUMP 150 1A Ø 24 key 8

→ P.V.750 ONLY PUMP complete with Capillary Oiler

[cod.1000040]



OPTIONAL:

As far as the P.V.750 COMPLETE, the G.P.V.750 ON BRACKET and the G.P.V.750 ON TANK is possible, upon request to be provided with OIL/AIR SEPARATOR 500/750 [cod.2000012]

TECHNICAL INFORMATION:

POWER MOTOR	Kpa	RPM PUMP	N.L./MIN.	PULLEY PUMP	MOTOR PULLEY	ASSORB (A)	PRESSURE EXIT kpa	RPM MOTOR
2,2 Kw / 3 Hp	50	1250	750	150 1A	130 1A	11 A	3	1400
1,5 Kw / 2 Hp	50	1100	600	150 1A	120 1A	9 A	2	1400



G.P.V.750 ON BRACKET:

CAPILLARY OILER:

- G.P.V.750 Hp. 2 - Lt/min. 600 [cod.1000042]
- G.P.V.750 Hp. 2 230V - Lt/min. 600 [cod.1100042]
- G.P.V.750 Hp. 3 - Lt/min. 750 [cod.1000041]
- G.P.V.750 Hp. 3 230V - Lt/min. 750 [cod.1100041]
- G.P.V.750 without electric motor * [cod.1000043]

N.B.: The pump without electric motor will be supplied of motor pulley and belt trasmission

G.P.V.750 ON TANK Lt.65 and Lt.28:

CAPILLARY OILER:

- G.P.V.750 Lt.65 - Hp. 2 - Lt/min. 600 [cod.1000045]
- G.P.V.750 Lt.65 - Hp. 2 230V - Lt/min. 600 [cod.1100045]
- G.P.V.750 Lt.65 - Hp. 3 - Lt/min. 750 [cod.1000044]
- G.P.V.750 Lt.65 - Hp. 3 230V - Lt/min. 750 [cod.1100044]
- G.P.V.750 Lt.65 - without electric motor * [cod.1000046]
- G.P.V.750 Lt.28 - Hp. 2 - Lt/min. 600 [cod.1000047]
- G.P.V.750 Lt.28 - Hp. 2 230V - Lt/min. 600 [cod.1100047]
- G.P.V.750 Lt.28 - without electric motor * [cod.1000048]



N.B.: The pump without electric motor will be supplied of motor pulley and belt trasmission

Specification:

- Exit Tank: Lt. 65 2" - 60 mm; Lt. 28 1"1/4 - 40 mm
- * - In the order of G.P.V. without electric motor please specificate wich type of motor will to install, for supply to you the right pulley motor.



P.V.500 BARE:

CAPILLARY OIL SYSTEM:

- P.V.500 BARE
- with Nipples Oil 14 x 27 Thread 1/4" Inlet Ø5 [cod.1001050]

P.V.500 COMPLETE:

- P.V.500 BARE
- SILENCER
- SEPARATOR
- GALVANIZED ELBOW
- NON RETURN VALVE BRASS 1"1/4
- ADP SLEEVE 1"1/4 x 1"1/4
- PULLEY PUMP 150 1A Ø 24 key 8

➔ P.V.500 ONLY PUMP complete
with Capillary Oiler

[cod.1000050]



OPTIONAL

OPTIONAL:

As far as the P.V.750 COMPLETE, the G.P.V.500 ON BRACKET and the G.P.V.500 ON TANK is possible, upon request to be provided with OIL/AIR SEPARATOR 500/750 [cod.2000012]

TECHNICAL INFORMATION:

POWER MOTOR	Kpa	RPM PUMP	N.L./MIN.	PULLEY PUMP	MOTOR PULLEY	ASSORB (A)	PRESSURE EXIT	RPM MOTOR
1,5 Kw / 2 Hp 220V	50	1250	500	150 1A	130 1A	8,5 A	0,10 bar	1400
1,5 Kw / 2 Hp 380V	50	1250	500	150 1A	130 1A	A	0,10 bar	1400



G.P.V.500 ON BRACKET:

CAPILLARY OILER:

- G.P.V.500 Hp. 2 - Lt/min. 500 [cod.1000051]
- G.P.V.500 Hp. 2 230V - Lt/min. 500 [cod.1100051]
- G.P.V.500 without electric motor * [cod.1000053]

N.B.: The pump without electric motor will be supplied of motor pulley and belt trasmission

G.P.V.500 ON TANK Lt.65 and Lt.28:

CAPILLARY OILER:

- G.P.V.500 Lt.65 - Hp. 2 - Lt/min. 500 [cod.1000054]
- G.P.V.500 Lt.65 - Hp. 2 230V - Lt/min. 500 [cod.1100054]
- G.P.V.500 Lt.65 - without electric motor * [cod.1000056]
- G.P.V.500 Lt.28 - Hp. 2 - Lt/min. 500 [cod.1000055]
- G.P.V.500 Lt.28 - Hp. 2 230V - Lt/min. 500 [cod.1100055]
- G.P.V.500 Lt.28 - without electric motor * [cod.1000057]



N.B.: The pump without electric motor will be supplied of motor pulley and belt trasmission

Specification:

- Exit Tank: Lt. 65 2" - 60 mm; Lt. 28 1"1/4 - 40 mm
- * - In the order of G.P.V. without electric motor please specificate wich type of motor will to install, for supply to you the right pulley motor.



P.V.350 BARE:

CAPILLARY OIL SYSTEM:

→ P.V.350 BARE
with Nipples Oil 14 x 27 Thread 1/4" Inlet Ø5 [cod.1001060]

P.V.350 COMPLETE:

- P.V.350 BARE
- SILENCER
- PULLEY PUMP 130 1A Ø 19 key 6
- Feet of 250/350

→ P.V.350 ONLY PUMP complete
with Capillary Oiler

[cod.1000060]



TECHNICAL INFORMATION:

POWER MOTOR	Kpa	RPM PUMP	N.L./MIN.	PULLEY PUMP	MOTOR PULLEY	ASSORB (A)	PRESSURE EXIT	RPM MOTOR
1,1 Kw / 1,5 Hp 220V	50	1400	350	130 1A	130 1A	5,8 A	0,10 bar	1400
1,1 Kw / 1,5 Hp 380V	50	1400	350	130 1A	130 1A	2 A	0,10 bar	1400



G.P.V.350 ON TANK Lt.28:

- G.P.V.350 Hp. 1,5 - Lt/min. 350 [cod.1000065]
- G.P.V.350 Hp. 1,5 230V - Lt/min. 350 [cod.1100065]
- G.P.V.350 without electric motor * [cod.1000066]

N.B.: The pump without electric motor will be supplied of motor pulley and belt trasmission

G.P.V.350 ON BRACKET :

- G.P.V.350 Hp.1,5 - Lt./min. 350 [cod.1000063]
- G.P.V.350 without electric motor * [cod.1000064]

G.P.V.350 ON TANK Lt.45:

- G.P.V.350 Hp. 1,5 - Lt/min. 350 [cod.1000061]
- G.P.V.350 Hp. 1,5 230V - Lt/min. 350 [cod.1100061]
- G.P.V.350 without electric motor * [cod.1000062]



N.B.: The pump without electric motor will be supplied of motor pulley and belt trasmission

Specification:

- Exit Tank: Lt. 45 1"1/4 - 40 mm; Lt. 28 1"1/4 - 40 mm
- * - In the order of G.P.V. without electric motor please specificate wich type of motor will to install, for supply to you the right pulley motor.



E.P.V.280 DRY:

ELECTROPUMP DRY:

→ E.P.V.280 DRY
ELECTROPUMP complete - Hp. 1,3 230V [cod.1000080]

→ E.P.V.280 DRY
ELECTROPUMP complete - Hp. 1,3 380V [cod.1100080]

- VACUUM PUMP 280
- SILENCER of 280 lubricate
- ELECTRIC MOTOR Hp.1,3 ONE-PHASE or THREE-PHASE

E.P.V.280 LUBRICATE:

ELECTROPUMP LUBRICATE:

→ E.P.V.280 LUBRICATE
ELECTROPUMP complete - Hp. 1,3 230V [cod.1000081]

→ E.P.V.280 LUBRICATE
ELECTROPUMP complete - Hp. 1,3 380V [cod.1100081]

- VACUUM PUMP 280
- SILENCER of 280 lubricate
- ELECTRIC MOTOR Hp.1,3 ONE-PHASE or THREE-PHASE



G.P.V.280 mod. MOBILE DRY:

ELECTROPUMP DRY:

→ G.P.V.280 ELECTROPUMP on
TANK Lt.22 dry - Hp. 1,3 - 230V mod. mobile [cod.1000084]

→ G.P.V.280 ELECTROPUMP on
TANK Lt.22 dry - Hp. 1,3 - 380V mod. mobile [cod.1100084]



ACCESSORIES: VACUUM METER, BRASS SPRING VACUUM REGULATOR 400 n.l./min., RED WHEELS, MOBILE ARM

G.P.V.280 LUBRICATE mod. MOBILE:

ELECTROPUMP LUBRICATE:

- G.P.V.280 ELECTROPUMP on TANK Lt.22 lubricate - Hp. 1,3 - 230V mod. mobile [cod.1000086]
- G.P.V.280 ELECTROPUMP on TANK Lt.22 lubricate - Hp. 1,3 - 380V mod. mobile [cod.1100086]



ACCESSORIES: VACUUM METER, BRASS SPRING VACUUM REGULATOR 400 n.l./min., RED WHEELS, MOBILE ARM

G.P.V.280 DRY ON TANK:

ELECTROPUMP DRY:

- G.P.V.280 on TANK Lt.22 dry - Hp. 1,3 230V [cod.1000082]
- G.P.V.280 on TANK Lt.22 dry - Hp. 1,3 380V [cod.1100082]



- E.P.V.280 dry
- TANK Lt.22
- BRACKET 280

ACCESSORIES: VACUUM METER, BRASS SPRING VACUUM REGULATOR 400 n.l./min., ADP SLEEVES, SEAL FOR JOINT

G.P.V.280 LUBRICATE ON TANK:

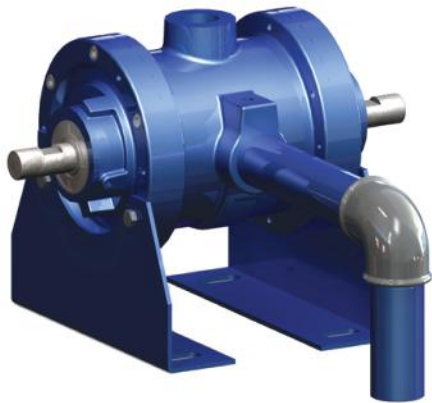
ELECTROPUMP LUBRICATE:

- G.P.V.280 on TANK Lt.22 lubricate - Hp. 1,3 230V [cod.1000083]
- G.P.V.280 on TANK Lt.22 lubricate - Hp. 1,3 380V [cod.1100083]

- E.P.V.280 lubricate
- TANK Lt.22,
- BRACKET 280



ACCESSORIES: VACUUM METER, BRASS SPRING VACUUM REGULATOR 400 n.l./min., ADP SLEEVES, SEAL FOR JOINT



P.V.250 BARE:

CAPILLARY OILER:

- P.V.250 BARE
with Nipples Oil 14 x 27 Thread 1/4" Inlet Ø5 [cod.1001070]

P.V.250 COMPLETE:

- P.V.250 ONLY PUMP complete
with Capillary Oiler [cod.1000070]

- P.V.350 BARE
- SILENCER
- PULLEY PUMP 130 1A Ø 19 key 6
- Feet of 250/350



G.P.V.250 ON TANK:



CAPILLARY OILER:

- G.P.V.250 ON TANK Lt.28 - Hp. 1,5 [cod.1000071]
- G.P.V.250 ON TANK Lt.28 - Hp. 1,5 230V [cod.1100071]
- G.P.V.250 ON TANK Lt.28 - without electric motor [cod.1000072]

N.B.: The pump without electric motor will be supplied of motor pulley and belt trasmission

E.P.V.200 DRY:

ELECTROPUMP DRY:

→ E.P.V.200 DRY
ELECTROPUMP complete - Hp. 1,1 230V [cod.1000090]

→ E.P.V.200 DRY
ELECTROPUMP complete - Hp. 1,1 380V [cod.1100090]



- VACUUM PUMP 200
- SILENCER of 200 dry
- ELECTRIC MOTOR Hp.1,1 ONE-PHASE or THREE-PHASE

G.P.V.200 ON TANK:

ELECTROPUMP DRY:

→ G.P.V.200 on TANK Lt.22 dry - Hp. 1,1 230V [cod.1000091]

→ G.P.V.200 on TANK Lt.22 dry - Hp. 1,1 380V [cod.1100091]



- E.P.V.200 dry
- TANK Lt.22
- BRACKET 200

ACCESSORIES: VACUUM METER, BRASS SPRING VACUUM REGULATOR 400 n.l./min., ADP SLEEVES, SEAL FOR JOINT

G.P.V.200 mod. MOBILE DRY:

ELECTROPUMP DRY:

→ G.P.V.200 ELECTROPUMP on
TANK Lt.22 dry - Hp. 1,1 - 230V mod. mobile [cod.1000092]

→ G.P.V.200 ELECTROPUMP on
TANK Lt.22 dry - Hp. 1,1 - 380V mod. mobile [cod.1100092]



ACCESSORIES: VACUUM METER, BRASS SPRING VACUUM REGULATOR 400 n.l./min., RED WHEELS, MOBILE ARM



E.P.V.180 DRY:

ELECTROPUMP DRY:

→ E.P.V.180 DRY
ELECTROPUMP complete - Hp.0,75 230V [cod.1000010]

- VACUUM PUMP 180
- SILENCER of 180 dry
- ELECTRIC MOTOR Hp.0,75 ONE-PHASE

G.P.V.180 ON TANK:

ELECTROPUMP DRY:

→ G.P.V180 on TANK Lt.22 dry - Hp. 0,75 230V [cod.1000011]

- E.P.V.180 dry
- TANK Lt.22
- BRACKET 200



ACCESSORIES: VACUUM METER, BRASS SPRING VACUUM REGULATOR 400 n.l./min., ADP SLEEVES, SEAL FOR JOINT

G.P.V.180 mod. MOBILE DRY:

ELECTROPUMP DRY:

→ ELECTROPUMP on
TANK Lt.22 dry - Hp. 0,75 - 230V mod. mobile [cod.1000012]



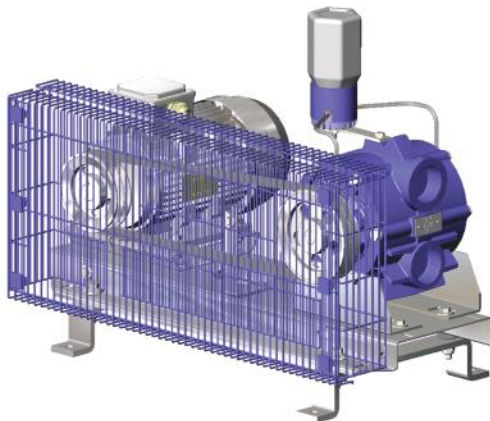
ACCESSORIES: VACUUM METER, BRASS SPRING VACUUM REGULATOR 400 n.l./min., RED WHEELS, MOBILE ARM

P.V.2200/1500/1000 AL:

- P.V.2200 AL ONLY PUMP
fitting VP77/78 with pulley 150 2A and capillar oiler [cod.1000208]
- P.V.1500 AL ONLY PUMP
fitting VP76 with pulley 160 2A and capillar oiler [cod.1000200]
- P.V.1500 AL ONLY PUMP
fitting VP77 with pulley 160 2A and capillar oiler [cod.1000214]
- P.V.1000 AL ONLY PUMP
fitting VP76 with pulley 140 2A and capillar oiler [cod.1000201]



G.P.V.2200/1500/1000 AL ON BRACKET:
(supply without silencer, non return valve and ADP sleeves)



- G.P.V.2200 AL on BRACKET Hp.5,5 - Lt./min. 1800 [cod.1000209]
- G.P.V.2200 AL on BRACKET Hp.5,5 - Lt./min. 2000 [cod.1000212]
- G.P.V.2200 AL on BRACKET Hp.7,5 - Lt./min. 2300 [cod.1000210]
- G.P.V.2200 AL on BRACKET without electric motor [cod.1000211]
- G.P.V.1500 AL on BRACKET Hp.5,5 - Lt./min. 1450 [cod.1000205]
- G.P.V.1500 AL on BRACKET Hp. 4 - Lt./min. 1300 [cod.1000206]
- G.P.V.1500 AL on BRACKET without electric motor [cod.1000207]
- G.P.V.1000 AL on BRACKET Hp. 3 - Lt./min. 900 [cod.1000202]
- G.P.V.1000 AL on BRACKET Hp. 4 - Lt./min. 1000 [cod.1000204]
- G.P.V.1000 AL on BRACKET without electric motor [cod.1000203]

SPECIAL ACCESSORIES PUMP AL:

- Tank Lt.60 for pumps mod. AL [cod.6001002]
- Gasket for cover mod. AL [cod.2000407]
- Vanes in Kevlar for VP74 [cod.5005426]
- Vanes in Kevlar for VP76 [cod.5005427]
- Vanes in Kevlar for VP77 [cod.5005428]
- Vanes in Kevlar for VP78 [cod.5005429]
- Vanes in Kevlar for DVP 800 [cod.5000179]
- Vanes in Kevlar for DVP 1200 [cod.5000178]
- Vanes in Kevlar for DVP 1600 [cod.5000148]



Specification:

- The pumps mod. AL have side exit;
- The exit / entry are all 2" and require reductions in gas 2" - 1 1/2";
- All pulley and all belt are section "A" 13 mm.

- 1 - 1"1/4 - 1"1/2 nickel plated ball cock **cod.5000035**
- 2 - Complete stainless steel connection **cod.5000040**
- 3 - Stainless steel pipe **cod.5000049**
- 4 - Stainless steel spring **cod.5001049**
- 5 - Seal for tubes **cod.5002049**
- 6 - Curved flanged air cock 3/4" - 1" **cod.5000036**
- Curved flanged air cock 1"1/4 - 1"1/2 **cod.5000037**
- 7 - Straight flanged air cock 3/4" - 1" **cod.5000038**
- Straight flanged air cock 1"1/4 - 1"1/2 **cod.5000039**



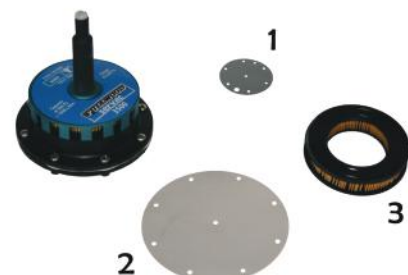
- 1 - Straight threaded air cock 1/2" **cod.5000043**
- Straight threaded air cock 3/8" **cod.5000045**
- 2 - Curved threaded air cock 1/2" **cod.5000044**
- Curved threaded air cock 3/8" **cod.5000047**
- 3 - Ball valve 1/2" for pipe 1 1/4" - 1 1/2" **cod.5000041**
- Ball valve 1/2" for pipe 2" **cod.5000042**
- Ball valve 1/2" for pipe 1" - 3/4" **cod.5000046**

- 1 - Plastic drain valve 3/4" **cod.5001034**
- Plastic drain valve 1/2" **cod.5000034**
- 2 - Brass spring vacuum regulator 3/4" 200 n.l./min. **cod.5000066**
- 3 - Plastic spring vacuum regulator 3/4" 200 n.l./min. **cod.5000065**
- 4 - Vacuum Meter Ø 63 - 3/8" **cod.5000030**
- Vacuum Meter Ø 100 - 1/2" **cod.5000032**
- Vacuum Meter Ø 160 - 1/2" **cod.5000033**



- 1) Brass spring vacuum regulator 1" 400 n.l./min. **cod.5000064**
- 2) SERVAC vacuum regulator 400 n.l./min. **cod.5000069**
- 3) Plastic spring vacuum regulator 1" 500 n.l./min. **cod.5000068**
- 4) Valve STABILVAC 3600 n.l./min. **cod.5000312**
- 5) Valve STABILVAC 6000 n.l./min. **cod.5000321**
- 6) Valve STABILVAC 4000 n.l./min. **cod.5000320**
- 7) Valve STABILVAC 1500 n.l./min. **cod.5000304**

- SERVAC Valve 1" 3500 n.l./min. Fullwood **cod.5000350**
- 1) Fullwood valve small membrane **cod.5000310**
- 2) Fullwood valve main membrane **cod.5000309**
- 3) Fullwood valve filter **cod.5000308**





Vanes CTA milk oil pumps in KEVLAR (measure mm):

Vanes for G.P.V.250 lubricate	(120 x 40 x 5)	cod.5000081
Vanes for G.P.V.280 lubricate	(65 x 50 x 6)	cod.5000082
Vanes for G.P.V.350 lubricate	(120 x 45 x 5)	cod.5000080
Vanes for G.P.V.500 lubricate	(82 x 50 x 6)	cod.5000079
Vanes for G.P.V.750 lubricate	(82 x 65 x 6)	cod.5000078
Vanes for G.P.V.1000 lubricate	(164 x 50 x 6)	cod.5000077
Vanes for G.P.V.1500 lubricate	(164 x 65 x 6)	cod.5000076
Vanes for G.P.V.2000 lubricate	(145 x 68 x 8)	cod.5000075
Vanes for G.P.V.2200 lubricate	(245 x 65 x 6)	cod.5000083
Vanes for G.P.V.3000 lubricate	(215 x 68 x 8)	cod.5000074
Vanes for G.P.V.3300 lubricate	(289 x 87 x 6)	cod.5000084

Vanes CTA milk dry pumps in GRAPHITE (measure mm):

Vanes for G.P.V.180 dry	(70 x 43 x 5)	cod.5000073
Vanes for G.P.V.200 dry	(70 x 45 x 6)	cod.5000072
Vanes for G.P.V.250 dry	(120 x 40 x 6)	cod.5000071
Vanes for G.P.V.280 dry	(65 x 50 x 6)	cod.5000070

Vanes Fitting ALFA LAVAL in BAKELITE and KEVLAR:

Vanes VP74	(82,5 x 48,8 x 4,6) BAK	cod.5000426
Vanes VP76	(152,3 x 48,8 x 4,6) BAK	cod.5000427
Vanes VP77	(199,9 x 60,3 x 5,3) BAK	cod.5000428
Vanes VP78	(203 x 76 x 6,23) BAK	cod.5000429
Vanes VP18	(120 x 40 x 4,6) KEV	cod.5000445
Vanes VP74	(82,5 x 48,8 x 4,6) KEV	cod.5005426
Vanes VP76	(152,3 x 48,8 x 4,6) KEV	cod.5005427
Vanes VP77	(199,9 x 60,3 x 5,3) KEV	cod.5005428
Vanes VP78	(203 x 76 x 6,23) KEV	cod.5005429
Vanes for DVP 800 KEV		cod.5000179
Vanes for DVP 1200 KEV		cod.5000178
Vanes for DVP 1600	(200 x 46,7 x 4,8) KEV	cod.5000148

Vanes Fitting SAC/EFFECTIV in BAKELITE:

Vanes SAC	600 Lt. (82,4 x 51,1 x 4,7) BAK	cod.5000421
Vanes SAC	1000 Lt. (152,4 x 51,1 x 4,7) BAK	cod.5000422
Vanes SAC	1350 Lt. (152,3 x 51,1 x 4,9) BAK	cod.5000423
Vanes SAC	1600 Lt. (225,5 x 49,1 x 4,7) BAK	cod.5000424

Vanes Fitting FULLWOOD in BAKELITE and KEVLAR:

Vanes Fitting FR 2	(117 x 44,5 x 4,5) BAK	cod.5000430
Vanes Fitting FR 3	(181 x 44,5 x 4,5) BAK	cod.5000431
Vanes Fitting FR 4	(278 x 44,5 x 4,5) BAK	cod.5000432
Vanes Fitting Q4	(280 X 65 X 4,4) KEVLAR	cod.5000152

Vanes Fitting TECNOZOO in KEVLAR:

Vanes TNZ	(220 X 67 X 5,8) KEV	cod.5000560
Vanes TNZ	(270 X 67 X 5,8) KEV	cod.5000561
Vanes TNZ	(160X 67 X 5,8) KEV	cod.5000566
Vanes TNZ	(125 X 67 X 5,8) KEV	cod.5000567

Vanes Fitting WESTFALIA in KEVLAR:

Vanes Fitting RPS 2800	(325 x 80 x 7,9)	cod.5005442
Vanes Fitting RPS 1500 - 2100	(280 x 65 x 4,9)	cod.5005441
Vanes Fitting RPS 1200	(200 x 41,5 x 4,9)	cod.5005412
Vanes Fitting RPS 20/900	(200 x 33 x 4,9)	cod.5002429
Vanes Fitting RPS 15/600-800	(150 x 33 x 4,9)	cod.5002428
Vanes Fitting RPS 10/400	(100 x 33 x 4,9)	cod.5005410
Vanes Fitting RPS 300	(70 x 33 x 4,9)	cod.5005409
Vanes Fitting RPS 200	(50 x 33 x 4,9)	cod.5005408

Vanes Fitting WESTFALIA in BAKELITE:

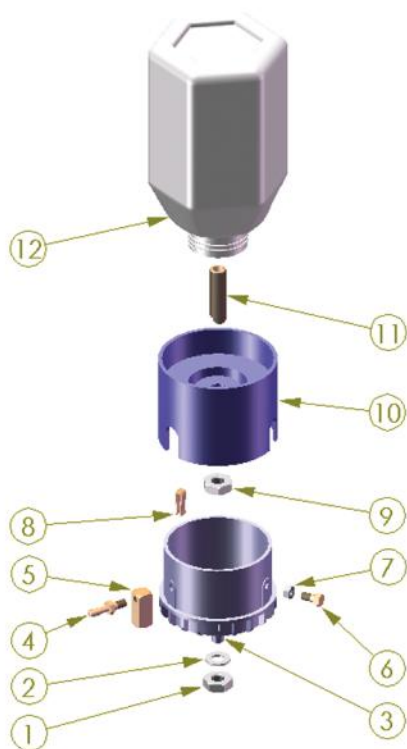
Vanes Fitting RPS 2800	(325 x 80 x 7,9)	cod.5000442
Vanes Fitting RPS 1500 - 2100	(280 x 65 x 4,9)	cod.5000441
Vanes Fitting RPS 1200	(200 x 41,5 x 4,9)	cod.5000412
Vanes Fitting RPS 20/900	(200 x 33 x 4,9)	cod.5001429
Vanes Fitting RPS 15/600-800	(150 x 33 x 4,9)	cod.5001428
Vanes Fitting RPS 10/400	(100 x 33 x 4,9)	cod.5000410
Vanes Fitting RPS 300	(70 x 33 x 4,9)	cod.5000409
Vanes Fitting RPS 200	(50 x 33 x 4,9)	cod.5000408

Single Capillary Oiler 600 ml. for G.P.V. 250/280/350 **cod.5000100**

Single Capillary Oiler 600 ml. per G.P.V. 500/750/1000 **cod.5001100**

Single Capillary Oiler 600 ml. per G.P.V. 1500 **cod.5003100**

Double Capillary Oiler 600 ml. per G.P.V. 2200/3300 **cod.5002100**



Capillary Oiler Exploded Drawings:

- 1) Fixing nut for oil feeder **cod.5000112**
- 2) Washer Ø8 **cod.5000111**
- 3) Lower plastic body **cod.5000102**
- 4) Brass nipples **cod.5000107**
- 5) Brass support board 10 x 24 mm **cod.5000108**
- 6) Screw normal oiler 5 x 12 mm **cod.5000821**
- 7) Bolt normal oiler **cod.5000819**
- 8) Suction tongue: 4 mm **cod.5000109**
6 mm **cod.5001109**
- 9) Fixing nut for set screw **cod.5000121**
- 10) Upper plastic body **cod.5000103**
- 11) Set screw **cod.5000106**
- 12) Plastic trasparente container **cod.5000101**

Oil can of Lt. 1 min. 46 **cod.5000204**

Oil can of Lt. 5 min. 46 **cod.5000203**

Oil can of Lt. 20 min. 46 **cod.5001203**

Set of n°6 can Lt. 5 (tot. Lt. 30) min. 46 **cod.5000205**





Complete Drip Feed Oiler for all kind of vacuum pump:

- 1) Bracket (20 cm x 24 cm) with 2 drip feed lubricator **cod.5003800**
- 2) Bracket (20 cm x 24 cm) with 3 drip feed lubricator **cod.5004800**

Choice of the oil:

Only use specific oil for vacuum pump milking machines type:

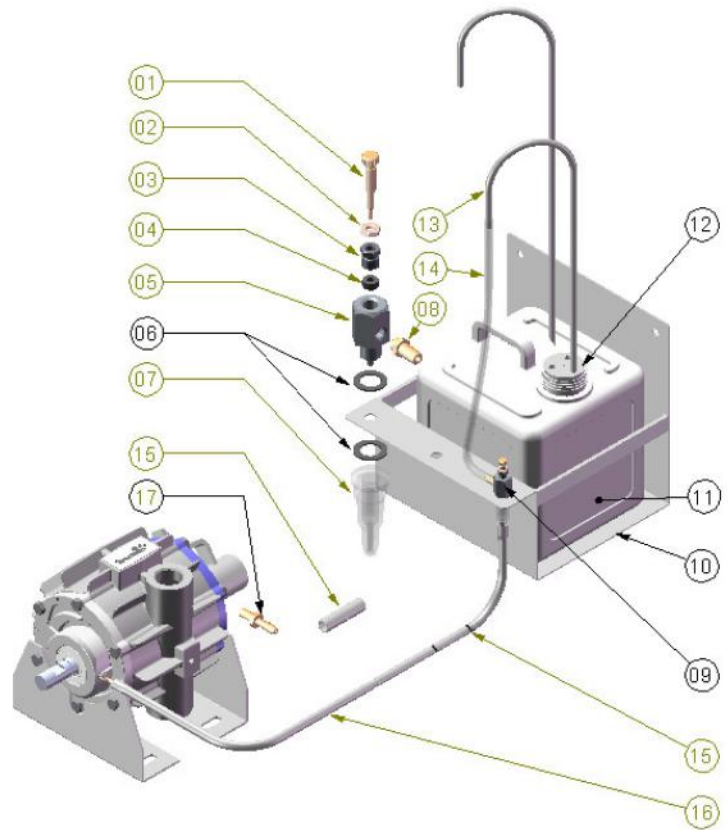
- in countries of warm climate > MIN 68/ISO 68
- in countries of moderate climate > MIN 46/ISO 46
- in countries of cold climate > MIN 32/ISO 20

WARNING!

- do not use other oils
- do not use oil with dyes, paraffin or other solvents;
- do not use used or exhausted oil.

Drip Feed Oiler Exploded Drawings:

- 1) Set screw **cod.5000808**
- 2) Bolt **cod.5000809**
- 3) Bolt 8 x 7 mm **cod.5000810**
- 4) OR drip feed regulator **cod.5000730**
- 5) Body oiler **cod.5000811**
- 6) Flat gasket **cod.5000812**
- 7) Plastic body trasparent **cod.5000813**
- 8) Brass Nipples **cod.5000107**
- 9) Drip feed regulator **cod.5000802**
- 10) Wall support **cod.5002801**
- 11) Oil jerry can Lt.10 **cod.3000614**
- 12) Plug for jerry can Ø42 - 48 mm **cod.5002803**
- 13) S/S suction-pipes "U" bend 62 cm **cod.5000816**
- 14) PVC trasparent tubing (0,70 mt) **cod.5000118**
- 15) S/S suction pipes 30 mm + hole 1 mm **cod.5000818**
- 16) PVC trasparent tubing (1,50 mt) **cod.5000118**
- 17) Pump nipples 14x27 mm Ø8 (3300) **cod.5000107.01**
- 17) Pump nipples 10x21 mm Ø8 (2200/1600) **cod.5000107.05**

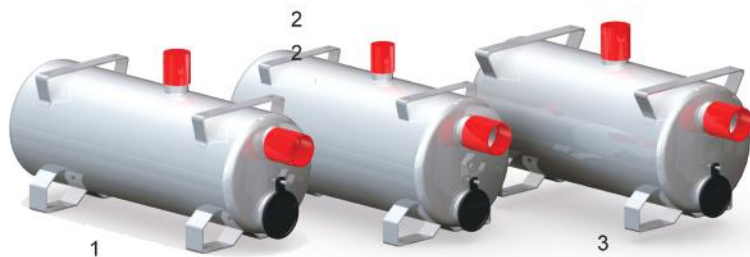


Tank Lt.110

Superior enter 3"/Lateral Exit 4" - for G.P.V.3300 **cod.6100001**

Tank Lt.110

Superior enter 3"/Lateral Exit 4" - for G.P.V.2200 **cod.6100002**



1 - Tank Lt.65 / exit 2" - for G.P.V.1000/1500/1600 **cod.6000002**

1 - Tank Lt.65 / exit 2" - for G.P.V.500/750 **cod.6000003**

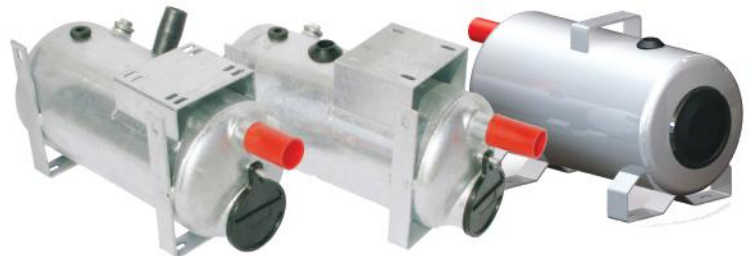
2 - Tank Lt.85 / exit 3" - for G.P.V.2200 **cod.6000000**

3 - Tank Lt.85 / exit 3" - for G.P.V.1000/1500/1600 **cod.6000001**

Tank Lt.45 / exit 1"1/4 - for G.P.V.350 **cod.6000004**

Tank Lt.22 / exit 1"1/4 - for G.P.V.180/200 **cod.6000007**

Tank Lt.22 / exit 1"1/4 - for G.P.V.280 **cod.6000005**



Tank Lt.28 / exit 1"1/4 -
for G.P.V.250 - 350 - 500 / 750 compact **cod.6000006**

Tank Lt.28 / exit 1"1/4 - for G.P.V.350 compact **cod.6000008**

N.B. The Tanks are included of rubber caps (the filter and the adiprene sleeves are not included)



Wall bracket for G.P.V.500/750/1000/1500 (Lt.65)

cod.6001100

Wall bracket for G.P.V.2200 (Lt.85)

cod.6000100

Vertical balancing tank Lt.110 exit 4"

cod.6002019

Vertical balancing tank Lt.85 exit 3"

cod.6000018

Vertical balancing tank Lt.65 exit 2"

cod.6000019

Horizontal balancing tank Lt.110 exit 4"

cod.6000016

Horizontal balancing tank Lt.85 exit 3"

cod.6000017

Horizontal balancing tank Lt.65 exit 2"

cod.6002017



1 - Plastic Cap condensate discharge

cod.5000016

2 - Joint for the window's tank

cod.3000034

3 - Cap galvanized for balancing tank

cod.3000154

4 - Drain Valve in PLS 3/4"

cod.5001034

5 - Lower bracket for balancing tank

cod.6000250

6 - n°2 Handbill Ø40 PM 8 x 40mm

cod.9000552

1 - Tank Lt.25 blue in PLS shape exit "L" Ø75 mm

cod.6000241

2 - Tank Lt.33 blue in PLS shape exit "L" Ø90 mm

cod.6000242

3 - Tank Lt.33 blue in PLS shape exit "T" Ø63 mm

cod.6000243



N.B. The Tanks are included of rubber caps (the filter and the adiprene sleeves are not included)

Cardan joint for G.P.V.350/250

cod.2000100

Cardan joint for G.P.V.750/500

cod.2000101

Cardan joint for G.P.V.1500/1000

cod.2000102



In-line filter a "Tee" with exhaust 1"

cod.2000165

3/4" cartridge filter with ball (G.P.V.200/180)

cod.2000164

1" cartridge filter with ball (G.P.V.350/250/280)

cod.2000018

2" cartridge filter with ball (G.P.V.500 a 1500)

cod.2000017

2"1/2 cartridge filter with ball (G.P.V.2200)

cod.2000019

3" cartridge filter with ball adapted to 4"

cod.2000161

3" cartridge filter with ball (for balancing tank)

cod.2000162

4" cartridge filter without ball (for balancing tank)

cod.2000166

1) Vibration damper rubber close for bracket

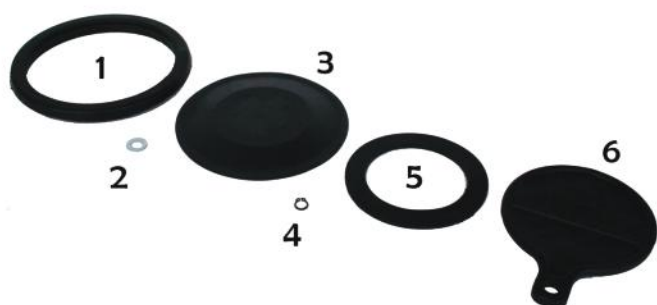
cod.3000152

2) Rubber entry 1" on tank (G.P.V. 350/280)

cod.3001150

3) Vibration damper rubber open for bracket

cod.3000151



1) Joint for the window's tank

cod.3000034

2) Pin washer d. 8

cod.3000505

3) Sheet for tanks window in plastic

cod.6001010

4) Seeger pin d. 8

cod.3000506

5) Seal gasket condensate discharge

cod.3001037

6) Seal condensate discharge in plastic

cod.3000501



ADIPRENE SLEEVES and RUBBER AND ADIPRENE CAPS (only for vaccum tubes):

Adp sleeves 2" x 2" (60 mm - 60 mm)	cod.3000037	Adp sleeves 2"1/2 x 3" (75 - 90 mm)	cod.3000061
Adp sleeves 2" x 3" (60 - 90 mm)	cod.3002037	Adp sleeves 2" x 2"1/2 (60 - 75 mm)	cod.3000062
Adp sleeves 3"x 3" (90 - 90 mm)	cod.3000038	Adp sleeves 4" x 4" (110 - 110 mm)	cod.3000081
Adp sleeves 1"1/4 x 1"1/2 (40 - 50 mm)	cod.3000040	Adp sleeves 4" x 3" (110 - 90 mm)	cod.3000082
Adp sleeves 1" x 1"1/2 (40 - 32 mm)	cod.3000041	Adp sleeves 4" x 2"1/2 (110 - 75 mm)	cod.3000083
Adp sleeves 1" x 1"1/4 (32 - 50 mm)	cod.3000042	Rubber cap 1"1/4 (40 mm)	cod.3000047
Adp sleeves 1"1/4 x 2" (40 - 60 mm)	cod.3000043	Rubber cap 1"1/2 (50 mm)	cod.3000046
Adp sleeves 1"1/4 x 1"1/4 (40 - 40 mm)	cod.3000049	Adp cap 2" (60 mm)	cod.3000045
Adp sleeves 2"1/2 x 2"1/2 (75 - 75 mm)	cod.3000060	Adp caap 3" (90 mm)	cod.3000048


BELTS:

V-Belt A 36	cod.6000149		
V-Belt A 37 (G.P.V. 350 compact)	cod.6000088		
V-Belt A 39	cod.6000053		
V-Belt A 41 (G.P.V. 350 Lt. 45)	cod.6000054		
V-Belt A 43 (G.P.V. 250/350 for cardan joint)	cod.6000055		
V-Belt A 44 (G.P.V. 250)	cod.6001055	V-Belt B 46	cod.6000067
V-Belt A 56 (G.P.V. 500/750)	cod.6000058	V-Belt B 52 (G.P.V. 3000)	cod.6000068
V-Belt A 57	cod.6000179	V-Belt B 56 (G.P.V. 1000)	cod.6000069
V-Belt B 41	cod.6001067	V-Belt B 57 (G.P.V. 1500/2200)	cod.6001070

PUMP PULLEYS and CARDAN JOINT PULLEYS:

Aluminium pulley 80 1A (Ø19) no key + gr. 8	cod.6000111	Iron pulley 150/110 A (Ø24) key 6 + gr. 8	cod.6000045
Aluminium pulley 90 1A (Ø19) key 6 + gr.8	cod.6000043	Iron pulley 150/110 B (Ø24) key 6 + gr. 8	cod.6002046
Aluminium pulley 120 1A (Ø19) key 6 + gr. 8	cod.6000112	Iron pulley 150 1A (Ø24) key 6 + gr. 8 + fitting fan	cod.6000074
Aluminium pulley 130 1A (Ø19) key 6 + gr. 8	cod.6000040	Iron pulley 150 2A (Ø24) key 8 + fitting fan	cod.6000136
Aluminium pulley 140 1A (Ø19) no key + gr. 8	cod.6000076	Iron pulley 150 1B (Ø24) key 8 + fitting fan	cod.6000098
Aluminium pulley 140 2A (Ø24) key 8 + gr. 8	cod.6000139	Iron pulley 150 2B (Ø24) key 8 + fitting fan	cod.6000096
Aluminium pulley 160 2A (Ø24) key 8 + gr. 8	cod.6000138	Iron pulley 180 2B (Ø28) key 8 + fitting fan	cod.6000071
Aluminium pulley 150 2A (Ø24) ckey 8 + gr. 8	cod.6000137	Aluminium pulley 250 1B (for cardan joint)	cod.6000063
Aluminium pulley 150 1A (Ø24) key 8 + gr. 8	cod.6000079	Aluminium pulley 250 1A (for cardan joint)	cod.6000061

MOTOR PULLEYS:

Aluminium pulley 80 1A (Ø24) key 8 + gr. 8	cod.6000109		
Aluminium pulley 100 1A (Ø24) key 8 + gr. 8	cod.6000099		
Aluminium pulley 120 1A (Ø24) key 8 + gr. 8	cod.6000048		
Aluminium pulley 130 1A (Ø24) key 8 + gr. 8	cod.6000046		
Aluminium pulley 130 1A (Ø28) key 8 + gr. 8	cod.6000114		
Aluminium pulley 140 1A (Ø24) key 8 + gr. 8	cod.6000039		
Aluminium pulley 140 1A (Ø28) key 8 + gr. 8	cod.6000095		
Aluminium pulley 80 2A (Ø24) key 8 + gr. 8	cod.6000117		
Aluminium pulley 90 2A (Ø24) key 8 + gr. 8	cod.6000118		
Iron pulley 100 1B (Ø28) key 8 + gr. 8	cod.6000104		
Iron pulley 112 1B (Ø28) key 8 + gr. 8	cod.6000073	Aluminium pulley 170 2A (Ø28) key 8 + gr. 8	cod.6000092
Iron pulley 125 1B (Ø28) key 8 + gr. 8	cod.6000089	Aluminium pulley 100 1A (Ø28) key 8 + gr. 8	cod.6002090
Iron pulley 130 1B (Ø28) key 8 + gr. 8	cod.6000050	Aluminium pulley 140 2A (Ø19) key 6 + gr. 8	cod.6000147
Iron pulley 140 1B (Ø28) key 8 + gr. 8	cod.6000052	Aluminium pulley 110 1A (Ø24) key 8 + gr. 8	cod.6000187
Aluminium pulley 100 2A (Ø28) key 8 + gr. 8	cod.6000081	Aluminium pulley 150 1A (Ø19) key 6 + gr. 8	cod.6000186
Aluminium pulley 110 2A (Ø28) key 8 + gr. 8	cod.6000129	Aluminium pulley 150 2A (Ø19) key 6 + gr. 8	cod.6000150
Aluminium pulley 120 2A (Ø24) key 8 + gr. 8	cod.6000166	Aluminium pulley 150 2A (Ø28) key 8 + gr. 8	cod.6000226
Aluminium pulley 125 2A (Ø28) key 8 + gr. 8	cod.6000229	Aluminium pulley 100 2A (Ø24) key 8 + gr. 8	cod.6000220
Aluminium pulley 130 2A (Ø28) key 8 + gr. 8	cod.6000224	Aluminium pulley 80 2A (Ø24) key 8 + gr. 8	cod.6000117
Aluminium pulley 140 2A (Ø28) key 8 + gr. 8	cod.6000225	Aluminium pulley 110 2A (Ø24) key 8 + gr. 8	cod.6000221
Iron pulley 112 2B (Ø28) key 8 + gr. 8	cod.6002073	Aluminium pulley 120 1A (Ø28) key 8 + gr. 8	cod.6000165
Iron pulley 112 2B (Ø38) key 10 + gr. 8	cod.6001073	Aluminium pulley 110 1A (Ø19) key 6 + gr. 8	cod.6000134
Iron pulley 120 2B (Ø28) key 8 + gr.8	cod.6000078	Aluminium pulley 190 1B (Ø24) key 8 + gr. 8	cod.6000125
Iron pulley 120 2B (Ø38) key 10 + gr. 8	cod.6002078	Aluminium pulley 120 2A (Ø28) key 8 + gr. 8	cod.6000166
Iron pulley 125 2B (Ø28) key 8 + gr. 8	cod.6000107	Iron pulley 140 2A (Ø28) key 8 + gr. 8	cod.6000237
Iron pulley 130 2B (Ø28) key 8 + gr. 8	cod.6000090	Iron pulley 130 2A (Ø28) key 8 + gr. 8	cod.6000238
Iron pulley 130 2B (Ø38) key10 + gr. 8	cod.6002090	Iron pulley 110 2A (Ø28) key 8 + gr. 8	cod.6002110
Iron pulley 140 2B (Ø38) key10 + gr. 8	cod.6000097		
Iron pulley 95 2B (Ø38) key 10 + gr. 8	cod.6000146	FAN:	
Iron pulley 115 2B (Ø28) key 8 + gr. 8	cod.6000295	Aluminium Fan for P.V.1000/1500/1600/2200	cod.6000322
Aluminium pulley 170 2A (Ø24) key 8 + gr. 8	cod.6000077	Aluminium Fan for P.V.3300	cod.6000300



- Silencer for G.P.V.2200/3300 (2") **cod.6000131**
- Silencer for G.P.V.1600/1500/1000 (2") **cod.6000130**
- Silencer for G.P.V.500/750 (1"1/4) **cod.6000232**
- Silencer for G.P.V.250/350 (3/4") **cod.6000032**
- Silencer for G.P.V.200 dry **cod.6000033**
- Silencer for G.P.V.280 dry **cod.6002033**

Non return valve brass 2"

cod.6000034

Non return valve brass 1"1/4

cod.6000035

Non return valve rubber with clamp 2" inox

cod.6000120

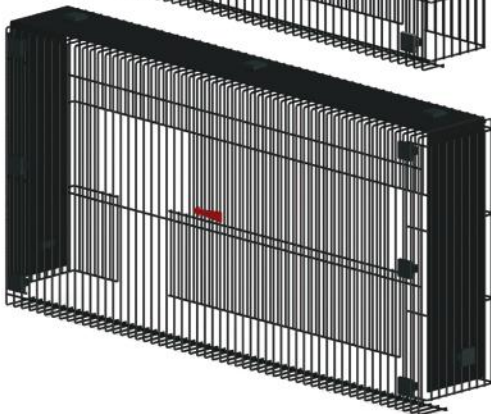
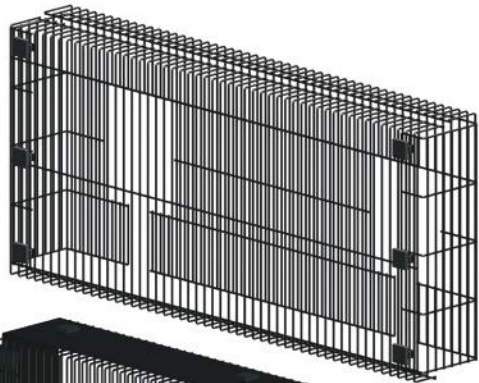


- Oil Separator
2" 1/2 d. 290 mm (for P.V. 3300) **cod.2000009**
- Oil Separator
2" d. 290 mm (for P.V. 2200) **cod.2000010**
- Oil Separator
2" d. 250 mm (for P.V. 1500/1000) **cod.2000011**
- Oil Separator
1" 1/4 d. 230 mm (for P.V. 750/500) **cod.2000012**

Small tend-belt sleigh (motor hp.1,5 / 2) **cod.6000020**

Medium tend-belt sleigh (motor hp.3 / 4 / 5,5) **cod.6000021**

Super tend-belt sleigh (motor hp.7,5 / 10) **cod.6000022**



Belt protection for G.P.V.350 **cod.6000023**

Belt protection for G.P.V.350 compact **cod.6001023**

Belt protection for G.P.V.500/750/1000/1500 **cod.6000024**

Belt protection for cardan joint **cod.6001024**

Belt protection for G.P.V.1600/2200/3300 (with fan) **cod.6002024**

Belt protection for G.P.V.250/500 compact **cod.6000025**

Bracket for tank for G.P.V.3300 **cod.6000085**

Bracket for tank for G.P.V.1600/2200 **cod.6000080**





Bracket for tank to G.P.V.1500/1000/750/500 **cod.6000011**

Bracket for tank to G.P.V.350 (Lt.45) **cod.6000012**

Complete floor bracket to normal G.P.V.500/750 (motor sleigh Hp.2) **cod.6000082**



Complete floor bracket to G.P.V.3300 with belt protection carter **cod.6000013**

Complete floor bracket to G.P.V.2200 with belt protection carter **cod.6002013**

Complete floor bracket to G.P.V.1000/1500 with belt protection carter **cod.60002014**

Complete floor bracket to normal G.P.V.750/1000/1500 (motor sleigh Hp.3/4/5,5) **cod.6000014**



ELECTRIC MOTOR

Electric motor hp.1,5 three-phase 380V 1400GG	cod.9000500	Electric motor hp.7,5 three-phase 380V 2800GG	cod.9000520
Electric motor hp.2 three-phase 380V 1400GG	cod.9000501	Electric motor hp.1,5 one-phase 230V 1400GG	cod.9000507
Electric motor hp.3 three-phase 380V 1400GG	cod.9000502	Electric motor hp.2 one-phase 230V 1400GG	cod.9000508
Electric motor hp.4 three-phase 380V 1400GG	cod.9000503	MElectric motor hp.3 one-phase 230V 1400GG	cod.9000509
Electric motor hp.5,5 three-phase 380V 1400GG	cod.9000504	Electric motor hp.1,5 one-phase 230V 2800GG	cod.9000521
Electric motor hp.7,5 three-phase 380V 1400GG	cod.9000505	Electric motor hp.2 one-phase 230V 2800GG	cod.9000522
Electric motor hp.10 three-phase 380V 1400GG	cod.9000506	Electric motor hp.3 one-phase 230V 2800GG	cod.9000523
Electric motor hp.1,5 three-phase 380V 2800GG	cod.9000515	Electric motor hp.0,75 three-phase 380V B3/B5	cod.9000510
Electric motor hp.2 three-phase 380V 2800GG	cod.9000516	Electric motor hp.1 three-phase 380V B3/B5	cod.9000511
Electric motor hp.3 three-phase 380V 2800GG	cod.9000517	Electric motor hp.0,75 one-phase 230V B3/B5	cod.9000512
Electric motor hp.4 three-phase 380V 2800GG	cod.9000518	Electric motor hp.1 one-phase 230V B3/B5	cod.9000513
Electric motor hp.5,5 three-phase 380V 2800GG	cod.9000519		



CONDENSER FOR ONE-PHASE MOTORS

Condenser for one-phase motor hp.0,75	cod.9000301	Condenser for one-phase motor hp.1,5	cod.9000304
Condenser for one-phase motor hp.1	cod.9000302	Condenser for one-phase motor hp.2	cod.9000305
Condenser for one-phase motor hp.1,3	cod.9000303	Condenser for one-phase motor hp.3	cod.9000306



Complete kit flow meter 6000 nl./min.
(flow meter+bypass+digital vacuum+suitcase+counter) cod.5000605

Complete kit flow meter 5000 nl./min.

(flow meter+
bypass 2000 nl./min.+digital vacuum+suitcase+counter) cod.5000606



1



2

1) Digital Vacuum Meter DVPM-01 (kpa) cod.5000603

2) Digital Vacuum Meter DVG-T (kpa) cod.5000602

Speedometer / Tachometer Digital Photo

cod.5000164



CTA milk[®]
VACUUM PUMPS FOR MILKING MACHINES

Via Laghi di Avigliana, 91
12022 BUSCA (CN) - ITALY

Tel. +39 0171.946756 - Fax +39 0171.946714

E-mail: dario.golle@ctamilk.com - www.ctamilk.com

P. IVA 02462390044 - C.I. INTRA CEE IT 02462390044 - REA n. 178228